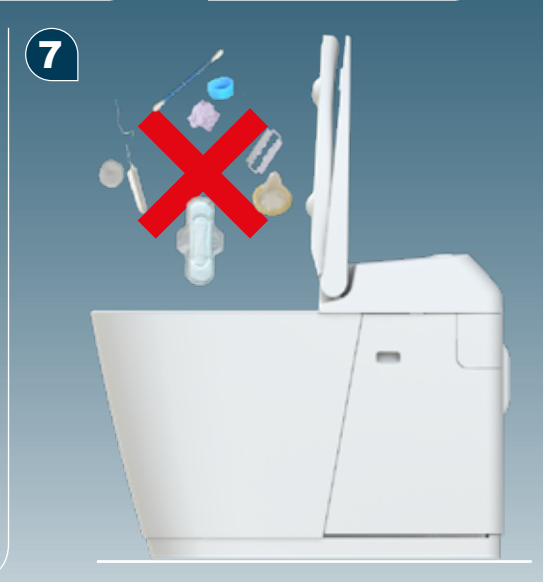
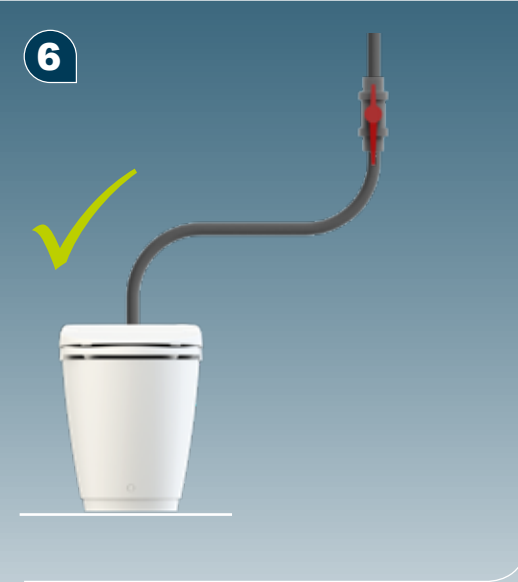
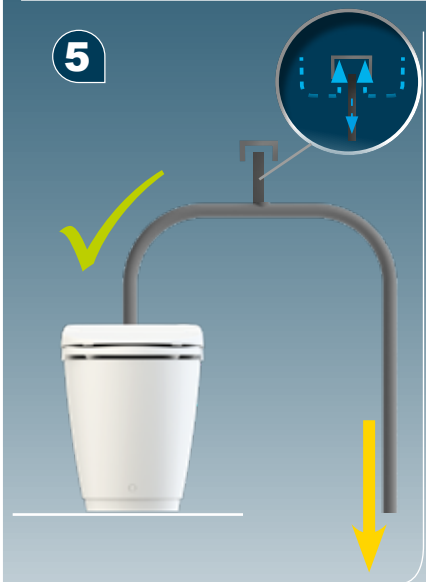
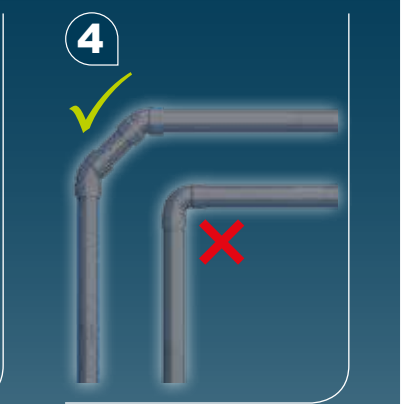
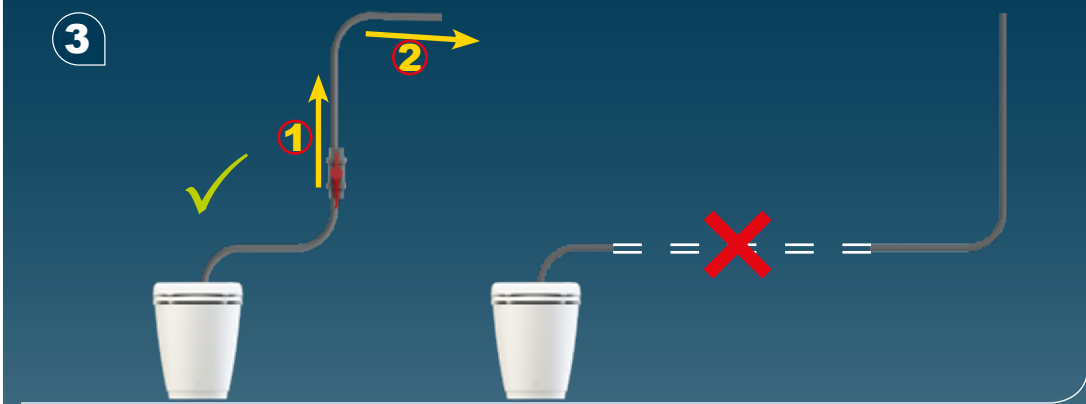
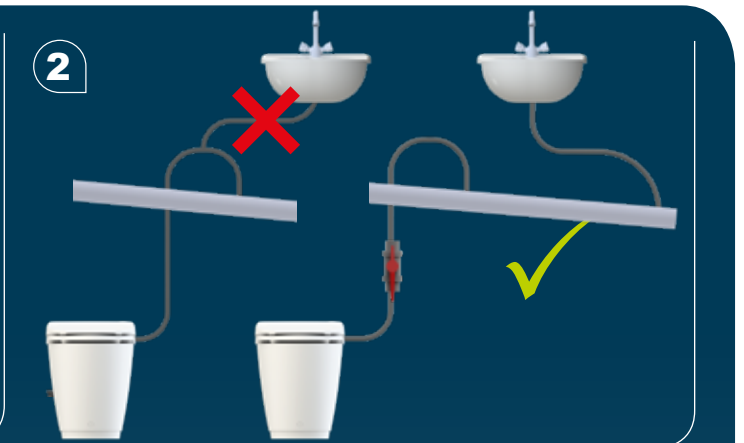
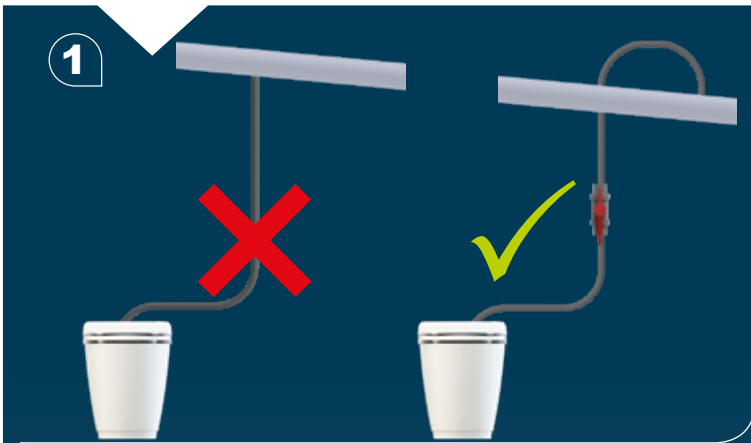
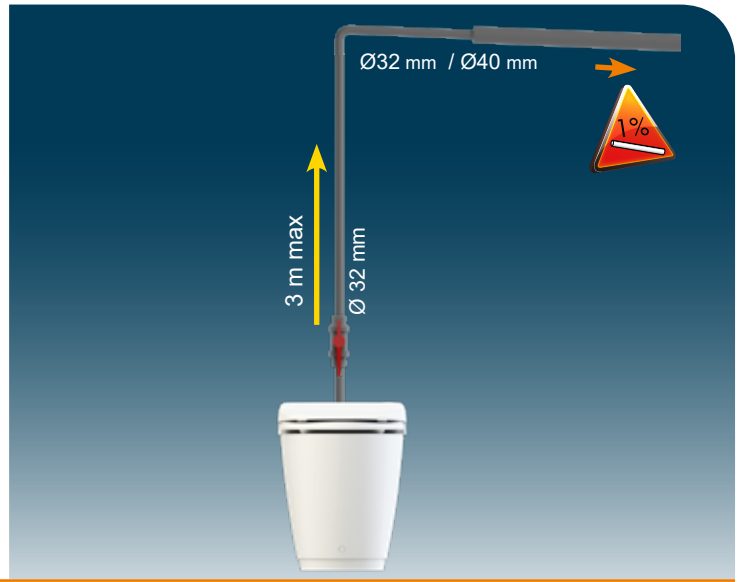


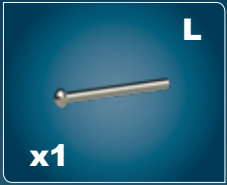
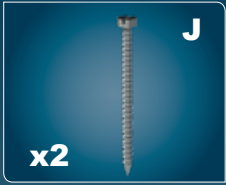
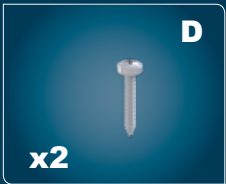
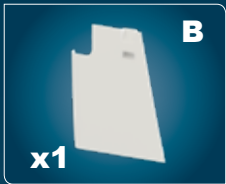
SANISMART

103

02.20

SFA**SANISMART®****FR** NOTICE D'INSTALLATION**UK** INSTALLATION INSTRUCTIONS**DE** INSTALLATIONSHINWEISE**IT** STRUZIONI PER L'INSTALLAZIONE**ES** MANUAL DE INSTALACIÓN**PT** MANUAL DE INSTALAÇÃO**NL** INSTALLATIE VOORSCHRIFTEN**SE** INSTALLATIONSANVISNING**DK** INSTALLATIONSVEJLEDNING**NO** INSTALLASJONSANVISING**FI** ASENNUSOHJEET**HU** FELSZERELÉSI ÉS KEZELÉSI ÚTMUTATÓ**PL** INSTRUKCJA INSTALACJI**RU** ИНСТРУКЦИЯ ПО МОНТАЖУ И ЭКСПЛУАТАЦИИ**RO** MANUAL DE INSTALARE**CZ** NÁVOD K INSTALACI A POUŽÍVÁNÍ**TR** KURULUM KILAVUZU**EL** ΟΔΗΓΙΕΣ ΕΓΚΑΤΑΣΤΑΣΗΣ**CN** 用户应保留安装指南以备**KR** 설치내용서**HR** UPUTA ZA INSTALACIJU**AR** بي كيرتلا قرط**CE**





1



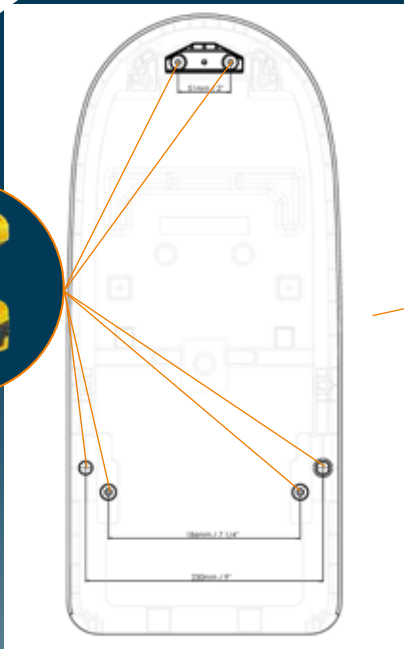
2



3

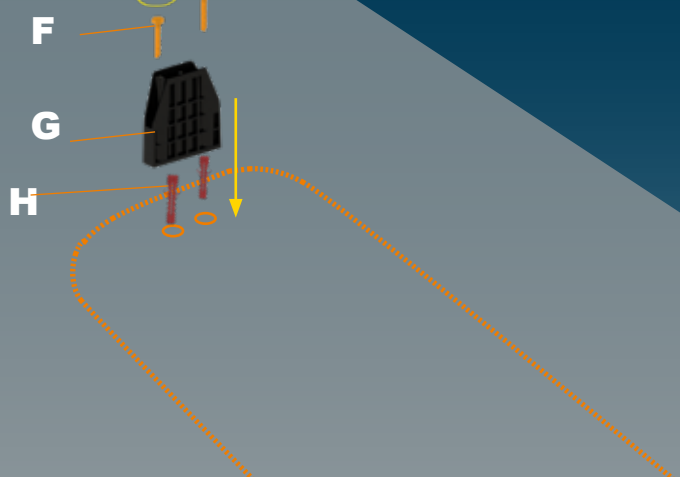


4



E

5



F

G

H

6



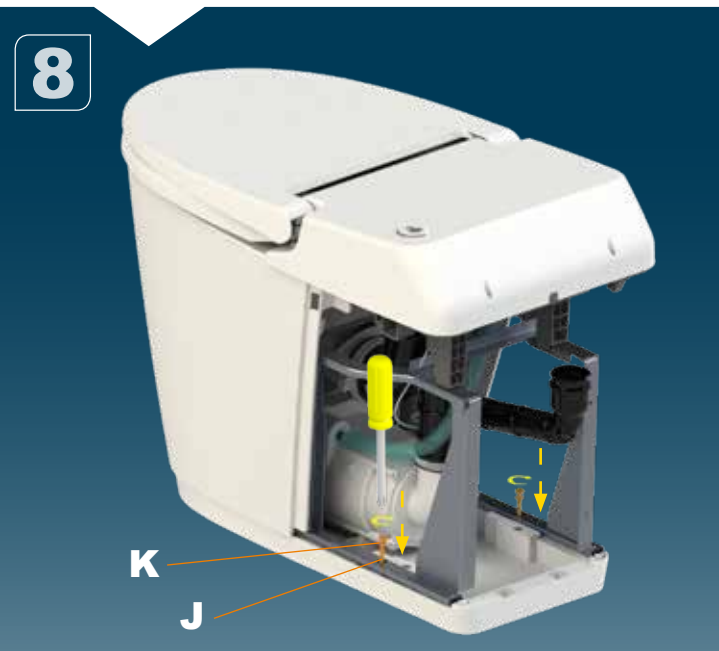
H

7



I

8



K

J

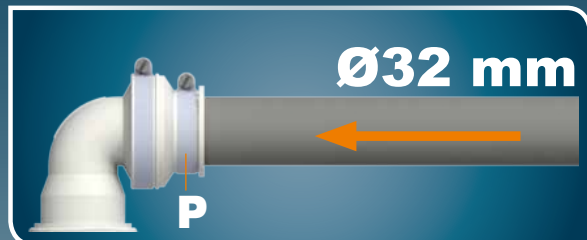
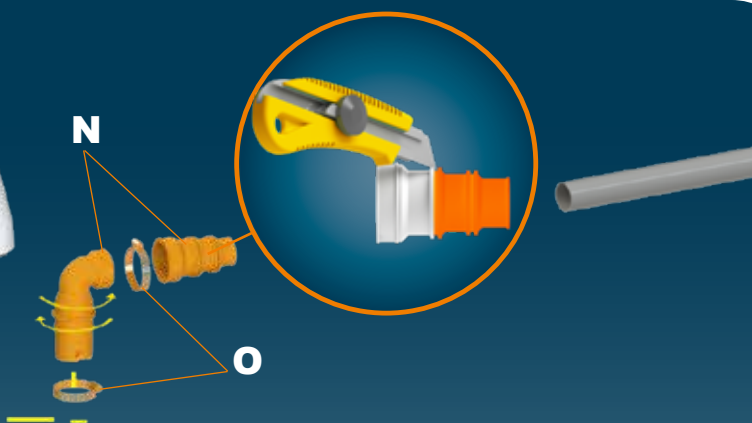
9



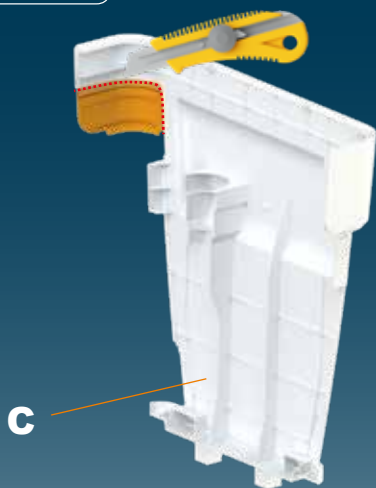
L

M

10



11



12

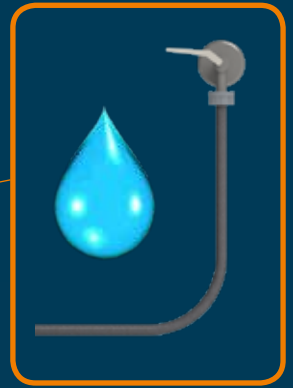


13



14





1



Avant branchement:
faire couler l'eau pour
évacuer les impuretés.

Before final connection
drain off to clear any debris.

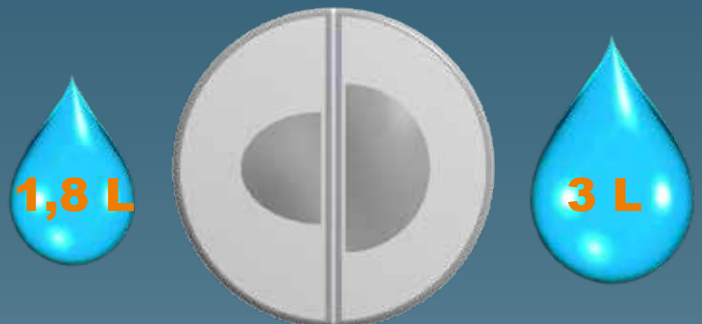
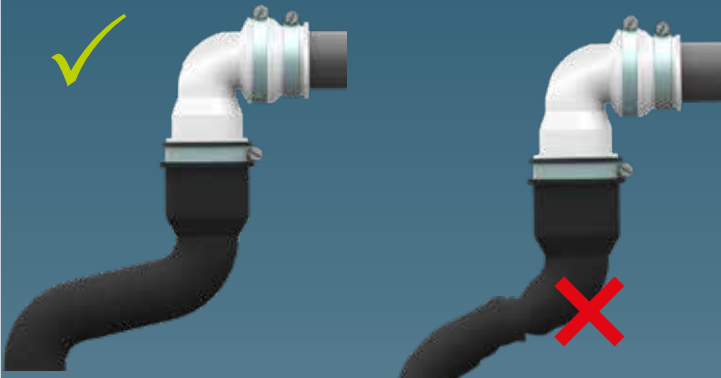
2

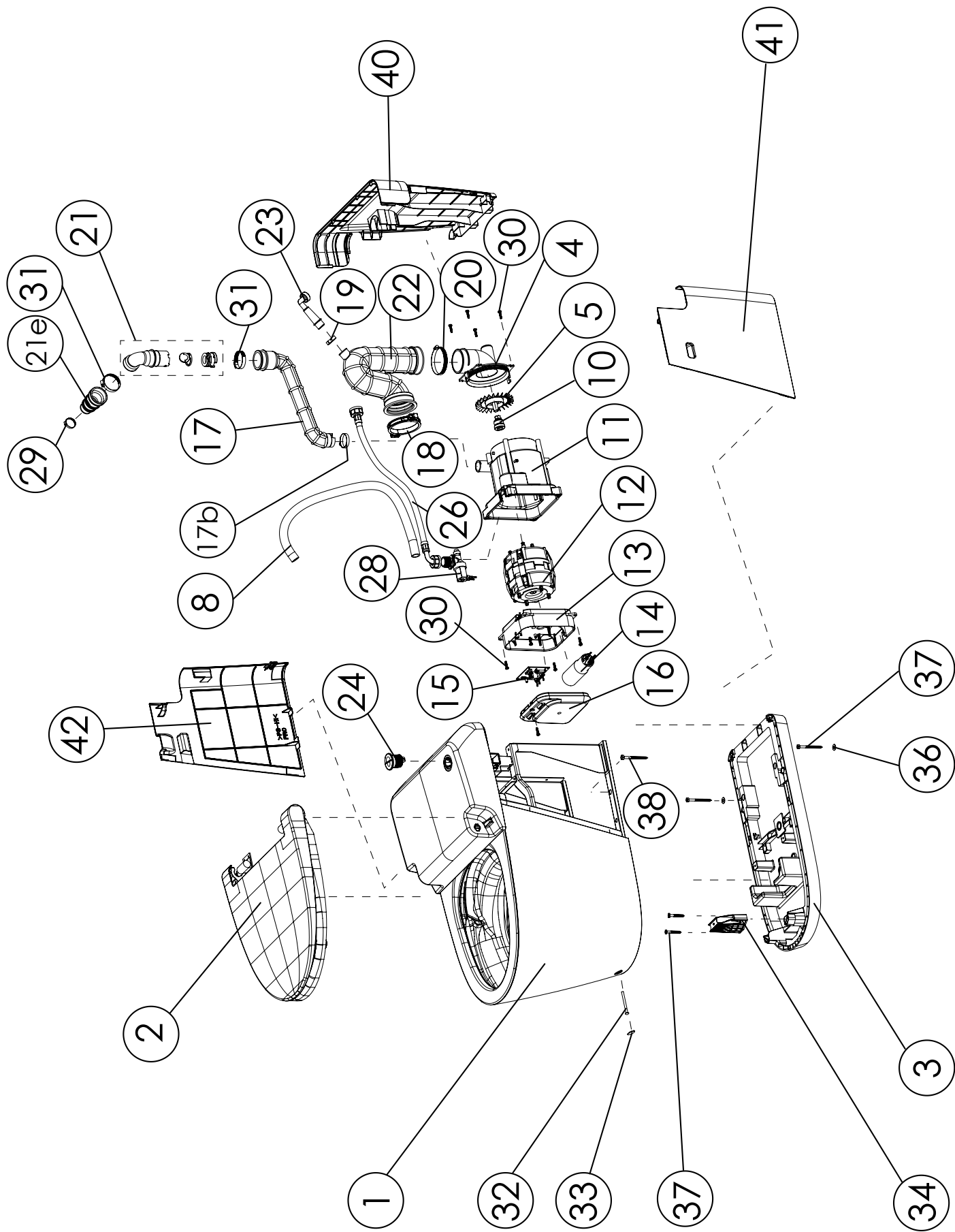


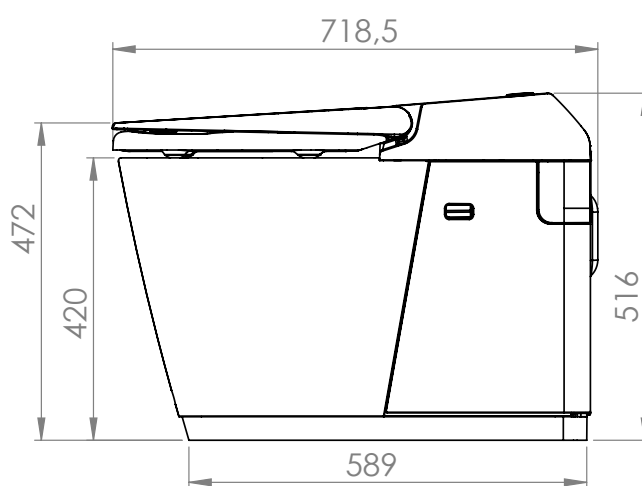
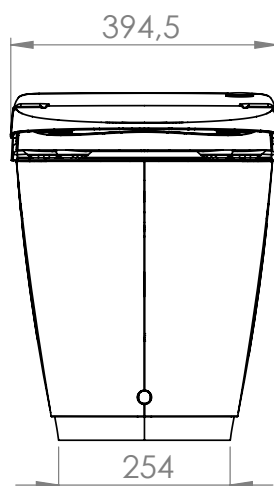
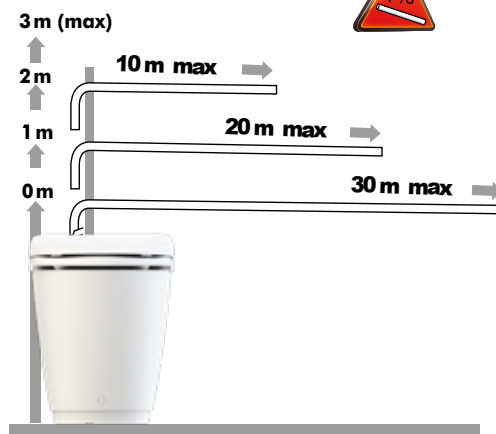
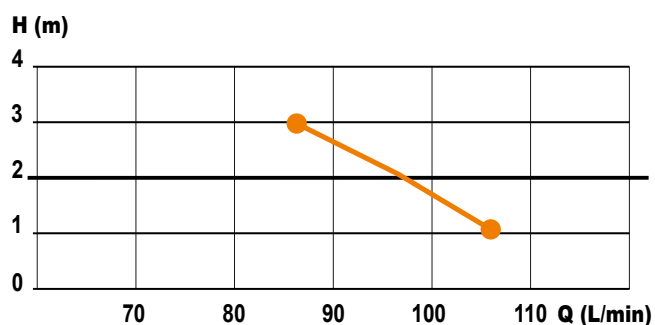
wateraansluitpunt

water supply

Keerklep EB
EB Check valve







SANISMART

220-240 V - 50-60 Hz - 2,5 A - 550 W - IP44 - ⚡

SERVICE HELPLINES

France
Tel. 01 44 82 25 55
Fax. 03 44 94 46 19

United Kingdom
Tel. 08457 650011 (Call from a land line)
Fax. 020 8842 1671

Ireland
Tel. 1850 23 24 25 (LOW CALL)
Fax. +353 46 97 33 093

Australia
Tel. +1300 554 779
Fax. +61.2.9882.6950

Deutschland
Tel. 0800 82 27 82 0
Fax. (060 74) 30928-90

Italia
Tel. 0382 6181
Fax. +39 0382 618200

España
Tel. +34 93 544 60 76
Fax. +34 93 462 18 96

Portugal
Tel. +35 21 911 27 85
Fax. +35 21 957 70 00

Suisse Schweiz Svizzera
Tel. +41 (0)32 631 04 74
Fax. +41 (0)32 631 04 75

Benelux
Tel. +31 475 487100
Fax. +31 475 486515

Sverige
Tel. +08-404 15 30

Norge
Tel. +08-404 15 30

Polska
Tel. (+4822) 732 00 33
Fax. (+4822) 751 35 16

РОССИЯ
Tel. (495) 258 29 51
Fax. (495) 258 29 51

Česká Republika
Tel. +420 266 712 855
Fax. +420 266 712 856

România
Tel. +40 724 364 543
service@saniflo.ro

Türkiye
Tel. +90 212 275 30 88
Fax. +90 212 275 90 58

Brazil
Tel. (11) 3052-2292

中国
Tel. +86(0)21 6218 8969
Fax. +86(0)21 6218 8970

South Africa
Tel. +27 (0) 21 286 00 28

Service information : www.sfa.biz